

**SOUTHWEST  
FEDERAL ORDER  
NO.126**

# **2008 STATISTICAL SUMMARY**

## **Producer Milk by Month, 2000 - 2008**



**PREPARED BY:  
SOUTHWEST MARKET ADMINISTRATOR'S OFFICE  
1404 CARROLL STREET ♦ CARROLLTON, TEXAS ♦ 75006 ♦ 972-245-6060**

**This Page Left Blank Intentionally**

**FORWARD**

*The data presented herein represents a compilation of federal information pertaining to the marketing of milk in the Southwest Marketing Area during January through December 2008. Except for the correction of mathematical and other obvious errors, the data presented was taken from Reports of Receipts and Utilization, Payroll Reports and Reports of Nonpool Handlers submitted to the office of the Market Administrator.*

*This information is prepared pursuant to Section 1000.25 (c)(8) of the General Provisions of Federal Milk Marketing Orders. Part 1000 is incorporated by reference and made a part of Federal Order No. 126 and states that the Market Administrator shall "prepare and disseminate publicly for the benefit of producers, handlers and consumers such statistics and other information concerning operation of the order and facts relevant to the provisions thereof (or proposed provisions) as do not reveal confidential information".*

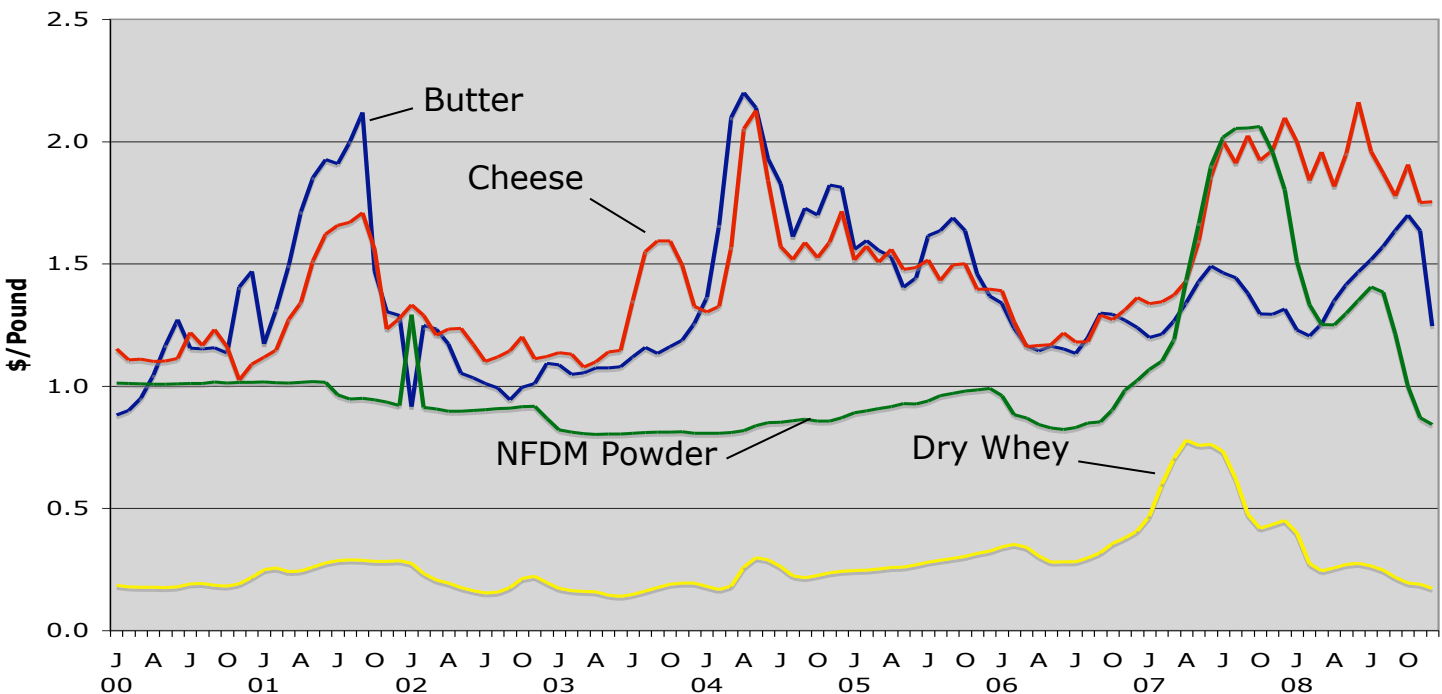
<b>Table Of Contents</b>		
<b>Figure/Table No</b>	<b>Title</b>	<b>Page</b>
Figure 1.	<i>Southwest Marketing Area Location Pricing Map.....</i>	<i>1</i>
Table 1.	<i>NASS Monthly Average Product Prices .....</i>	<i>2</i>
2.	<i>Component Prices Used to Compute Class and Producer Milk Value .....</i>	<i>3</i>
3.	<i>Class Prices, Producer Price Differential and Statistical Uniform Price -- Dallas .....</i>	<i>4</i>
4.	<i>Sources of Milk and Milk Products Received by Regulated Handlers.....</i>	<i>5</i>
5.	<i>Classification of Milk and Milk Products Received by Regulated Handlers.....</i>	<i>6</i>
6.	<i>Classification of Producer Milk Received by Regulated Handlers.....</i>	<i>7</i>
7.	<i>Classification of Other Source Milk Received by Regulated Handlers.....</i>	<i>8</i>
8.	<i>Classification of Opening Inventories at Regulated Handlers .....</i>	<i>9</i>
9.	<i>Classification of Overages at Regulated Handlers .....</i>	<i>10</i>
10.	<i>Utilization of Class I Product Pounds by Regulated Handlers .....</i>	<i>11</i>
11.	<i>Utilization of Class I Butterfat Pounds by Regulated Handlers.....</i>	<i>12</i>
12.	<i>Utilization of Class II Product Pounds by Regulated Handlers .....</i>	<i>13</i>
13.	<i>Utilization of Class II Butterfat Pounds by Regulated Handlers .....</i>	<i>13</i>
14.	<i>Utilization of Class III Product Pounds by Regulated Handlers .....</i>	<i>14</i>
15.	<i>Utilization of Class III Butterfat Pounds by Regulated Handlers .....</i>	<i>14</i>
16.	<i>Utilization of Class IV Product Pounds by Regulated Handlers .....</i>	<i>15</i>
17.	<i>Utilization of Class IV Butterfat Pounds by Regulated Handlers.....</i>	<i>15</i>
18.	<i>Total Disposition of Class I Products in the Southwest Marketing Area by All Handlers.....</i>	<i>16</i>
19.	<i>Total Disposition of Class I Butterfat Pounds in the Southwest Marketing Area by All Handlers .....</i>	<i>17</i>
20.	<i>Disposition of Class I Products in the Southwest Marketing Area by Regulated Handlers Under Southwest Federal Order No. 126 .....</i>	<i>18</i>
21.	<i>Disposition of Class I Butterfat Pounds in the Southwest Marketing Area by Regulated Handlers Under Southwest Federal Order No. 126.....</i>	<i>19</i>
22.	<i>Disposition of Class I Products on Routes Outside the Southwest Marketing Area by Regulated Handlers Under Southwest Federal Order No. 126 .....</i>	<i>20</i>
23.	<i>Disposition of Class I Butterfat Pounds on Routes Outside the Southwest Marketing Area by Regulated Handlers Under Southwest Federal Order No. 126.....</i>	<i>21</i>
24.	<i>Number of Producers, Average Daily Delivery Per Producer, and Average Butterfat Test of Producer Milk in the Southwest Federal Order No. 126.....</i>	<i>22</i>



**Table 1** **NASS Monthly Average Product Prices**

	<i>Monthly Averages</i>				<i>2-Week Averages</i>			
	Grade AA Butter	Cheddar Cheese	NFDM Powder	Dry Whey	Grade AA Butter	Cheddar Cheese	NFDM Powder	Dry Whey
2008	----- Dollars/Pound -----							
JAN	1.2301	1.9998	1.5090	0.3992	1.3146	2.1328	1.8304	0.4568
FEB	1.2044	1.8403	1.3331	0.2736	1.2585	2.0126	1.6931	0.4380
MAR	1.2539	1.9575	1.2512	0.2435	1.2150	1.8092	1.3398	0.2673
APR	1.3492	1.8164	1.2506	0.2560	1.2438	2.0190	1.2537	0.2454
MAY	1.4170	1.9525	1.2985	0.2700	1.3421	1.8038	1.2456	0.2528
JUN	1.4669	2.1609	1.3508	0.2758	1.4223	1.9527	1.3006	0.2686
JUL	1.5180	1.9585	1.4053	0.2642	1.4607	2.2156	1.3479	0.2774
AUG	1.5713	1.8699	1.3840	0.2470	1.5205	1.9792	1.3957	0.2690
SEP	1.6365	1.7773	1.2131	0.2183	1.5711	1.9041	1.3790	0.2487
OCT	1.6997	1.9065	0.9987	0.1945	1.6125	1.7279	1.2628	0.2241
NOV	1.6356	1.7511	0.8701	0.1895	1.6899	1.9323	1.0452	0.1970
DEC	1.2448	1.7544	0.8425	0.1730	1.6517	1.7420	0.8617	0.1896
AVERAGE	1.4356	1.8954	1.2256	0.2504	1.4419	1.9359	1.3296	0.2779

## NASS Monthly Average Product Prices, 2000-2008

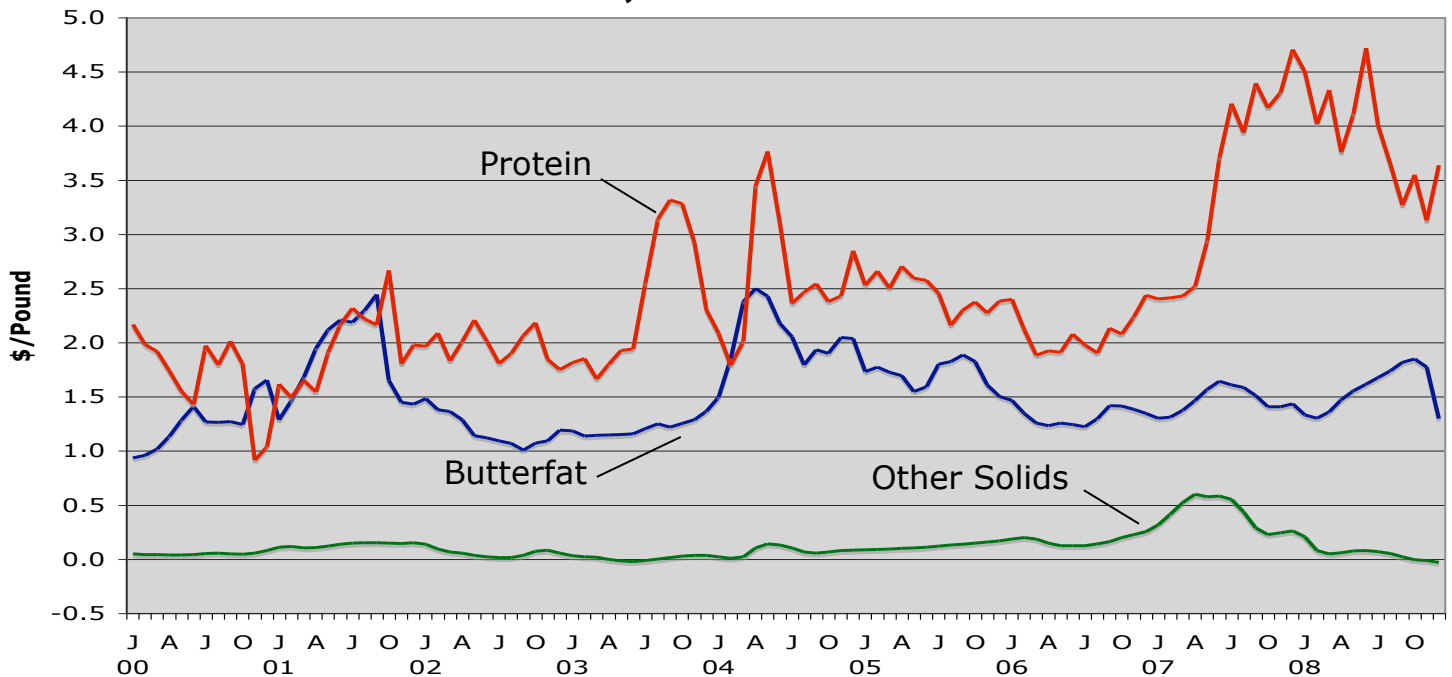


**Table 2** Component Prices Used to Compute Class and Producer Milk Value

	Butterfat	True Protein	Other Solids	Nonfat Solids	SCC Adjustment Rate <sup>a/</sup>
2008					
		----- Dollars/Pound -----			
JANUARY	1.3319	4.4994	0.2097	1.3385	0.00100
FEBRUARY	1.3010	4.0180	0.0803	1.1643	0.00092
MARCH	1.3604	4.3331	0.0493	1.0833	0.00098
APRIL	1.4748	3.7579	0.0622	1.0827	0.00091
MAY	1.5562	4.1108	0.0766	1.1301	0.00098
JUNE	1.6160	4.7193	0.0826	1.1819	0.00108
JULY	1.6774	4.0025	0.0707	1.2358	0.00098
AUGUST	1.7413	3.6497	0.0529	1.2147	0.00093
SEPTEMBER	1.8196	3.2689	0.0234	1.0455	0.00089
OCTOBER	1.8507	3.5490	(0.0047)	0.8226	0.00095
NOVEMBER	1.7730	3.1301	(0.0099)	0.6953	0.00088
DECEMBER	1.2998	3.6390	(0.0269)	0.6680	0.00088
AVERAGE	1.5668	3.8898	0.0555	1.0552	0.00095

<sup>a/</sup> SCC adjustment rate is per 1,000 difference per cwt.

## Component Prices Used to Compute Class and Producer Milk Value, 2000-2008



**Table 3 Class Prices, Producer Price Differentials and Statistical Uniform Price <sup>a/</sup>**

	Class I Price	Class II Price	Class III Price	Class IV Price	Producer Price Differential	Statistical Uniform Price
2008	----- Dollars/Hundredweight -----					
JANUARY	23.97	19.75	19.32	16.29	1.38	20.70
FEBRUARY	22.68	18.46	17.03	14.67	2.25	19.28
MARCH	19.70	15.63	18.00	14.17	(0.68)	17.32
APRIL	21.61	15.29	16.76	14.56	1.42	18.18
MAY	19.62	15.51	18.18	15.26	(0.30)	17.88
JUNE	21.18	16.19	20.25	15.92	(1.23)	19.02
JULY	23.78	16.81	18.24	16.60	1.85	20.09
AUGUST	21.47	17.45	17.32	16.64	2.00	19.32
SEPTEMBER	20.65	17.58	16.28	15.45	2.18	18.46
OCTOBER	18.53	16.60	17.06	13.62	0.20	17.26
NOVEMBER	20.33	14.45	15.51	12.25	1.38	16.89
DECEMBER	18.43	11.21	15.28	10.35	(0.53)	14.75
AVERAGE	21.00	16.24	17.44	14.65	0.83	18.26

<sup>a/</sup> Prices are quoted for 3.5% milk. Class I and Uniform Prices are subject to Zone and Location adjustments.

### Class I and Statistical Uniform Prices, 2000-2008

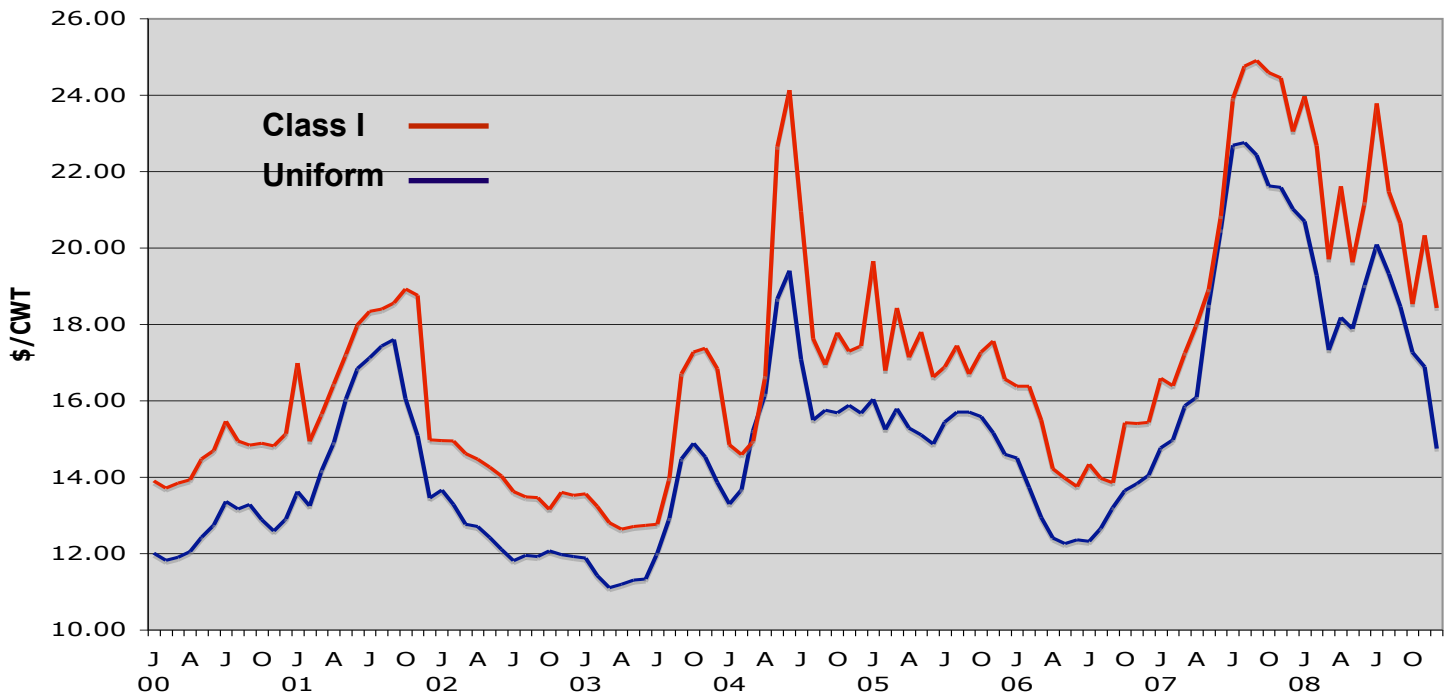




Table 4	Sources of Milk and Milk Products Received by Regulated Handlers
---------	--

	<i>Producer Milk</i>		<i>Other Source Milk And Milk Products</i>		<i>Opening Inventory</i>	
	Product	Butterfat	Product	Butterfat	Product	Butterfat
	----- Pounds -----					
2008						
JANUARY	834,018,368	31,760,544	54,518,811	2,321,163	39,324,250	1,564,060
FEBRUARY	753,991,718	28,020,644	60,794,126	2,544,865	33,525,911	1,337,704
MARCH	676,502,434	24,935,549	129,395,371	5,124,893	38,018,850	1,473,987
APRIL	1,087,987,878	39,104,902	100,064,883	4,120,302	42,430,333	1,708,138
MAY	701,656,433	24,981,961	117,008,172	4,609,230	45,433,485	1,723,642
JUNE	655,392,915	23,055,711	107,527,835	4,522,626	39,218,863	1,482,337
JULY	1,034,333,268	36,265,962	96,965,651	4,360,880	42,580,337	1,608,588
AUGUST	926,619,042	32,766,528	103,142,678	4,396,112	37,789,912	1,414,923
SEPTEMBER	900,616,454	32,328,166	86,104,505	3,582,412	45,931,037	1,843,098
OCTOBER	558,636,429	20,701,221	102,670,905	4,026,733	42,079,958	1,718,437
NOVEMBER	953,745,600	35,102,085	108,349,389	4,350,894	39,524,814	1,626,068
DECEMBER	603,946,110	22,687,223	124,984,091	4,955,804	49,225,024	2,194,685
TOTAL	9,687,446,649	351,710,496	1,191,526,417	48,915,914	495,082,774	19,695,667

	<i>Overage</i>		<i>Total</i>	
	Product	Butterfat	Product	Butterfat
	----- Pounds -----			
2008				
JANUARY			927,861,429	35,645,767
FEBRUARY	508	508	848,312,263	31,903,721
MARCH	7,719	7,719	843,924,374	31,542,148
APRIL	99,372	915	1,230,582,466	44,934,257
MAY	10,854	10,854	864,108,944	31,325,687
JUNE	97,491	18	802,237,104	29,060,692
JULY	3,751	3,751	1,173,883,007	42,239,181
AUGUST	28,308	6,670	1,067,579,940	38,584,233
SEPTEMBER	3,484	3,484	1,032,655,480	37,757,160
OCTOBER	61,330	5,427	703,448,622	26,451,818
NOVEMBER	2,093	2,093	1,101,621,896	41,081,140
DECEMBER	1,210	1,210	778,156,435	29,838,922
TOTAL	316,120	42,649	11,374,371,960	420,364,726

Table 5	Classification of Milk and Milk Products Received By Regulated Handlers
---------	---

	<i>Class I</i>			<i>Class II</i>			<i>Class III</i>		
	Product	Butterfat	% <sup>a/</sup>	Product	Butterfat	% <sup>a/</sup>	Product	Butterfat	% <sup>a/</sup>
	----- Pounds -----								
2008									
JAN	399,938,251	8,679,791	43.1	118,275,975	9,465,165	12.7	228,563,473	8,350,289	24.6
FEB	364,843,957	7,886,276	43.0	119,058,038	8,788,218	14.0	176,744,339	7,003,350	20.8
MAR	375,539,940	8,237,219	44.5	151,022,767	11,015,490	17.9	13,814,126	1,436,180	1.6
APR	380,598,023	8,133,287	30.9	144,311,962	10,650,220	11.7	400,751,903	14,810,733	32.6
MAY	383,666,182	8,372,713	44.4	149,906,732	10,869,653	17.3	17,618,986	1,728,967	2.0
JUN	336,612,470	7,750,288	42.0	153,204,761	11,887,935	19.1	12,246,506	1,839,765	1.5
JUL	347,316,912	8,041,340	29.6	161,275,489	12,596,246	13.7	399,669,922	15,388,983	34.0
AUG	366,507,903	8,252,095	34.3	151,007,986	11,846,929	14.1	373,272,692	14,076,022	35.0
SEP	382,001,317	8,318,518	37.0	127,849,883	10,547,513	12.4	374,198,167	13,927,756	36.2
OCT	404,847,244	8,837,450	57.6	134,897,087	10,499,782	19.2	16,134,352	1,515,485	2.3
NOV	372,676,008	8,339,589	33.8	118,003,283	9,782,085	10.7	406,489,897	15,508,267	36.9
DEC	392,482,817	8,982,797	50.4	123,227,462	9,876,409	15.8	15,883,000	1,177,908	2.0
TOTAL	4,507,031,024	99,831,363	39.6	1,652,041,425	127,825,645	14.5	2,435,387,363	96,763,705	21.4
	<i>Class IV</i>			<i>Total</i>					
	Product	Butterfat	% <sup>a/</sup>	Product	Butterfat				
	----- Pounds -----								
2008									
JAN	181,083,730	9,150,522	19.5	927,861,429	35,645,767				
FEB	187,665,929	8,225,877	22.1	848,312,263	33,250,660				
MAR	303,547,541	10,853,259	36.0	843,924,374	37,109,318				
APR	304,920,578	11,340,017	24.8	1,230,582,466	31,559,704				
MAY	312,917,044	10,354,354	36.2	864,108,944	44,407,453				
JUN	300,173,367	7,582,704	37.4	802,237,104	28,949,894				
JUL	265,620,684	6,212,612	22.6	1,173,883,007	28,689,963				
AUG	176,791,359	4,409,187	16.6	1,067,579,940	39,897,194				
SEP	148,606,113	4,963,373	14.4	1,032,655,480	37,905,426				
OCT	147,569,939	5,599,101	21.0	703,448,622	38,864,089				
NOV	204,452,708	7,451,199	18.6	1,101,621,896	27,088,358				
DEC	246,563,156	9,801,808	31.7	778,156,435	44,169,281				
TOTAL	2,779,912,148	95,944,013	24.4	11,374,371,960	420,364,726				

<sup>a/</sup> Based on product pounds. Percentages may not add to 100 percent.

Table 6	Classification of Producer Milk Received by Regulated Handlers
---------	--

	<i>Class I</i>			<i>Class II</i>			<i>Class III</i>		
	Product	Butterfat	% a/	Product	Butterfat	% a/	Product	Butterfat	% a/
	----- Pounds -----								
2008									
JAN	373,415,680	8,206,501	44.8	83,160,875	8,075,924	10.0	225,054,161	8,230,559	27.0
FEB	339,899,091	7,431,150	45.1	80,073,491	7,215,015	10.6	173,314,580	6,886,313	23.0
MAR	351,840,250	7,796,716	52.0	103,633,785	9,122,596	15.3	10,711,826	1,331,877	1.6
APR	355,341,279	7,657,819	32.7	99,786,992	8,979,849	9.2	398,001,675	14,691,430	36.6
MAY	358,601,184	7,891,169	51.1	104,109,134	8,836,263	14.8	14,016,918	1,594,696	2.0
JUN	312,002,944	7,259,308	47.6	119,305,622	9,839,928	18.2	8,792,872	1,514,038	1.3
JUL	324,215,790	7,566,895	31.3	113,837,365	10,039,592	11.0	396,013,403	15,017,886	38.3
AUG	343,214,993	7,763,064	37.0	100,213,677	9,353,775	10.8	370,384,906	13,948,612	40.0
SEP	358,312,392	7,865,451	39.8	75,806,745	8,144,985	8.4	370,142,987	13,799,171	41.1
OCT	377,859,355	8,338,755	67.6	83,569,807	8,458,830	15.0	12,477,335	1,405,148	2.2
NOV	345,485,925	7,793,916	36.2	83,207,704	8,087,959	8.7	403,260,697	15,360,868	42.3
DEC	366,997,288	8,499,764	60.8	85,322,101	8,179,537	14.1	12,083,626	971,990	2.0
TOTAL	4,207,186,171	94,070,508	43.4	1,132,027,298	104,334,253	11.7	2,394,254,986	94,752,588	24.7
	<i>Class IV</i>			<i>Total</i>					
	Product	Butterfat	% a/	Product	Butterfat				
	----- Pounds -----								
2008									
JAN	152,387,652	7,247,560	18.3	834,018,368	31,760,544				
FEB	160,704,556	6,488,166	21.3	753,991,718	28,020,644				
MAR	210,316,573	6,684,360	31.1	676,502,434	24,935,549				
APR	234,857,932	7,775,804	21.6	1,087,987,878	39,104,902				
MAY	224,929,197	6,659,833	32.1	701,656,433	24,981,961				
JUN	215,291,477	4,442,437	32.8	655,392,915	23,055,711				
JUL	200,266,710	3,641,589	19.4	1,034,333,268	36,265,962				
AUG	112,805,466	1,701,077	12.2	926,619,042	32,766,528				
SEP	96,354,330	2,518,559	10.7	900,616,454	32,328,166				
OCT	84,729,932	2,498,488	15.2	558,636,429	20,701,221				
NOV	121,791,274	3,859,342	12.8	953,745,600	35,102,085				
DEC	139,543,095	5,035,932	23.1	603,946,110	22,687,223				
TOTAL	1,953,978,194	58,553,147	20.2	9,687,446,649	351,710,496				

a/ Based on product pounds. Percentages may not add to 100 percent.

Table 7	Classification of Other Source Milk Received by Regulated Handlers
---------	--

	<i>Class I</i>			<i>Class II</i>			<i>Class III</i>		
	Product	Butterfat	% a/	Product	Butterfat	% a/	Product	Butterfat	% a/
	----- Pounds -----								
2008									
JAN	6,084,463	109,671	11.2	26,358,580	980,312	48.3	2,275,864	60,369	4.2
FEB	6,591,832	117,075	10.8	31,476,527	1,206,494	51.8	2,045,541	42,021	3.4
MAR	6,265,013	113,802	4.8	41,515,358	1,556,615	32.1	1,498,397	33,129	1.2
APR	6,823,274	133,042	6.8	37,537,231	1,333,563	37.5	1,744,584	59,524	1.7
MAY	6,345,601	123,871	5.4	36,565,520	1,571,977	31.3	2,530,750	54,912	2.2
JUN	6,065,901	123,056	5.6	27,204,180	1,632,013	25.3	2,528,028	273,346	2.4
JUL	6,365,516	127,251	6.6	37,082,904	2,036,253	38.2	2,752,360	322,659	2.8
AUG	6,776,534	136,658	6.6	39,549,421	2,069,454	38.3	1,618,555	67,428	1.6
SEP	6,746,595	138,949	7.8	37,238,640	1,673,792	43.2	1,659,596	20,331	1.9
OCT	6,430,671	127,057	6.3	41,709,984	1,460,661	40.6	2,104,912	59,130	2.1
NOV	5,955,710	115,172	5.5	28,751,449	1,268,218	26.5	2,611,056	107,245	2.4
DEC	5,192,932	105,289	4.2	23,690,385	1,166,587	19.0	2,640,995		2.1
TOTAL	75,644,042	1,470,893	6.3	408,680,179	17,955,939	34.3	26,010,638	1,100,094	2.2

	<i>Class IV</i>			<i>Total</i>	
	Product	Butterfat	% a/	Product	Butterfat
	----- Pounds -----				
2008					
JAN	19,799,904	1,170,811	36.3	54,518,811	2,321,163
FEB	20,680,226	1,179,275	34.0	60,794,126	2,544,865
MAR	80,116,603	3,421,347	61.9	129,395,371	5,124,893
APR	53,959,794	2,594,173	53.9	100,064,883	4,120,302
MAY	71,566,301	2,858,470	61.2	117,008,172	4,609,230
JUN	71,729,726	2,494,211	66.7	107,527,835	4,522,626
JUL	50,764,871	1,874,717	52.4	96,965,651	4,360,880
AUG	55,198,168	2,122,572	53.5	103,142,678	4,396,112
SEP	40,459,674	1,749,340	47.0	86,104,505	3,582,412
OCT	52,425,338	2,379,885	51.1	102,670,905	4,026,733
NOV	71,031,174	2,860,259	65.6	108,349,389	4,350,894
DEC	93,459,779	3,683,928	74.8	124,984,091	4,955,804
TOTAL	681,191,558	28,388,988	57.2	1,191,526,417	48,915,914

a/ Based on product pounds. Percentages may not add to 100 percent.

Table 8	Classification of Opening Inventories at Regulated Handlers
---------	---

	<i>Class I</i>			<i>Class II</i>			<i>Class III</i>		
	Product	Butterfat	% <sup>a/</sup>	Product	Butterfat	% <sup>a/</sup>	Product	Butterfat	% <sup>a/</sup>
----- Pounds -----									
2008									
JAN	20,438,108	363,619	52.0	8,756,520	408,929	22.3	1,233,448	59,361	3.1
FEB	18,353,034	338,051	54.7	7,508,020	366,709	22.4	1,384,218	75,016	4.1
MAR	17,434,677	326,701	45.9	5,873,624	336,279	15.4	1,603,903	71,174	4.2
APR	18,433,470	342,426	43.4	6,987,739	336,808	16.5	907,187	59,779	2.1
MAY	18,719,397	357,673	41.2	9,232,078	461,413	20.3	1,071,318	79,359	2.4
JUN	18,543,625	367,924	47.3	6,694,959	415,994	17.1	828,133	52,381	2.1
JUL	16,735,606	347,194	39.3	10,355,220	520,401	24.3	904,159	48,438	2.1
AUG	16,516,376	352,373	43.7	11,223,250	423,700	29.7	1,269,231	59,982	3.4
SEPT	16,942,330	314,118	36.9	14,801,014	725,252	32.2	2,395,584	108,254	5.2
OCT	20,557,218	371,638	48.9	9,561,393	580,291	22.7	1,552,105	51,207	3.7
NOV	21,234,373	430,501	53.7	6,044,130	425,908	15.3	618,144	40,154	1.6
DEC	20,292,597	377,744	41.2	14,214,039	529,348	28.9	1,158,379	205,918	2.4
TOTAL	224,200,811	4,289,962	45.3	111,251,986	5,531,032	22.5	14,925,809	911,023	3.0

	<i>Class IV</i>			<i>Total</i>	
	Product	Butterfat	% <sup>a/</sup>	Product	Butterfat
----- Pounds -----					
2008					
JAN	8,896,174	732,151	22.6	39,324,250	1,564,060
FEB	6,280,639	557,928	18.7	33,525,911	1,337,704
MAR	13,106,646	739,833	34.5	38,018,850	1,473,987
APR	16,101,937	969,125	37.9	42,430,333	1,708,138
MAY	16,410,692	825,197	36.1	45,433,485	1,723,642
JUN	13,152,146	646,038	33.5	39,218,863	1,482,337
JUL	14,585,352	692,555	34.3	42,580,337	1,608,588
AUG	8,781,055	578,868	23.2	37,789,912	1,414,923
SEP	11,792,109	695,474	25.7	45,931,037	1,843,098
OCT	10,409,242	715,301	24.7	42,079,958	1,718,437
NOV	11,628,167	729,505	29.4	39,524,814	1,626,068
DEC	13,560,009	1,081,675	27.5	49,225,024	2,194,685
TOTAL	144,704,168	8,963,650	29.2	495,082,774	19,695,667

<sup>a/</sup> Based on product pounds. Percentages may not add to 100 percent.

**Table 9** Classification of Overages at Regulated Handlers

	<i>Class I</i>			<i>Class II</i>			<i>Class III</i>		
	Product	Butterfat	% a/	Product	Butterfat	% a/	Product	Butterfat	% a/
----- Pounds -----									
2008									
JAN									
FEB									
MAR									
APR							98,457		99.1
MAY									
JUN							97,473		100.0
JUL									
AUG				21,638		76.4			
SEP				3,484	3,484	100.0			
OCT				55,903		91.2			
NOV									
DEC				937	937				
TOTAL				81,962	4,421	25.9	195,930		62.0

	<i>Class IV</i>			<i>Total</i>	
	Product	Butterfat	% a/	Product	Butterfat
----- Pounds -----					
2008					
JAN					
FEB	508	508	100.0	508	508
MAR	7,719	7,719		7,719	7,719
APR	915	915		99,372	915
MAY	10,854	10,854		10,854	10,854
JUN	18	18	0.0	97,491	18
JUL	3,751	3,751		3,751	3,751
AUG	6,670	6,670	23.6	28,308	6,670
SEP				3,484	3,484
OCT	5,427	5,427	8.8	61,330	5,427
NOV	2,093	2,093	100.0	2,093	2,093
DEC	273	273	22.6	1,210	1,210
TOTAL	38,228	38,228	12.1	316,120	42,649

a/ Based on product pounds. Percentages may not add to 100 percent.

Table 10	Utilization of Class I Product Pounds by Regulated Handlers
----------	---

	Whole Milk <sup>a/</sup>	Flavored Products	Low Fat 2 Percent <sup>b/</sup>	Low Fat 1 Percent <sup>b/</sup>	Skim Milk
----- Pounds -----					
2008					
JAN	143,197,560	43,755,442	122,808,775	32,945,598	33,822,159
FEB	125,743,001	43,061,815	110,498,963	30,911,658	31,153,780
MAR	134,110,776	37,762,028	116,961,615	30,550,816	31,819,301
APR	129,673,907	46,411,778	115,797,731	32,464,081	32,761,824
MAY	134,259,546	40,613,715	118,823,626	31,946,040	32,305,694
JUN	129,817,939	17,277,163	111,990,564	24,589,978	29,259,196
JUL	136,465,152	15,238,889	117,272,902	25,271,218	31,036,145
AUG	136,061,768	24,929,984	120,630,608	28,893,989	32,317,546
SEP	131,937,374	43,268,719	118,102,039	31,404,564	32,674,932
OCT	136,281,706	50,570,561	123,386,054	33,215,181	33,983,313
NOV	128,651,326	42,555,210	116,034,242	29,910,603	31,635,840
DEC	140,466,286	38,100,120	123,163,632	29,512,696	31,426,531
TOTAL	1,606,666,341	443,545,424	1,415,470,751	361,616,422	384,196,261

	Buttermilk	Excess Shrinkage	Ending Inventory	Total
----- Pounds -----				
2008				
JAN	3,301,769	3,165,264	16,941,684	399,938,251
FEB	3,131,215	3,721,455	16,622,070	364,843,957
MAR	3,244,358	3,995,478	17,095,568	375,539,940
APR	3,210,181	2,327,061	17,951,460	380,598,023
MAY	3,199,103	4,392,346	18,126,112	383,666,182
JUN	3,028,702	3,913,322	16,735,606	336,612,470
JUL	3,090,105	2,426,125	16,516,376	347,316,912
AUG	3,205,064	4,254,507	16,214,437	366,507,903
SEP	3,093,001	3,358,340	18,162,348	382,001,317
OCT	3,394,160	3,779,910	20,236,359	404,847,244
NOV	3,693,133	2,302,584	17,893,070	372,676,008
DEC	3,653,116	4,174,605	21,985,831	392,482,817
TOTAL	39,243,907	41,810,997	214,480,921	4,507,031,024

<sup>a/</sup> Includes bulk milk disposition to nonpool plants.

<sup>b/</sup> Includes both fortified and nonfortified products. Includes acidophilus.

Table 11	Utilization of Class I Butterfat Pounds by Regulated Handlers
----------	---

	Whole Milk <sup>a/</sup>	Flavored Products	Low Fat 2 Percent <sup>b/</sup>	Low Fat 1 Percent <sup>b/</sup>	Skim Milk
----- Pounds -----					
2008					
JAN	4,648,221	643,180	2,302,228	345,984	55,249
FEB	4,076,736	620,530	2,069,584	325,201	48,112
MAR	4,365,728	578,484	2,197,167	321,132	46,134
APR	4,220,282	658,239	2,170,787	339,779	50,548
MAY	4,371,513	610,493	2,232,792	337,174	52,262
JUN	4,227,476	377,332	2,113,061	258,771	51,428
JUL	4,436,168	367,925	2,205,708	266,076	65,683
AUG	4,428,269	459,861	2,265,120	304,541	65,632
SEP	4,285,290	628,434	2,226,322	332,890	71,120
OCT	4,425,546	808,561	2,313,350	345,999	72,149
NOV	4,186,635	813,291	2,164,774	307,712	65,815
DEC	4,555,310	845,191	2,301,244	302,872	55,984
TOTAL	52,227,174	7,411,521	26,562,137	3,788,131	700,116
----- Pounds -----					
	Buttermilk	Excess Shrinkage	Ending Inventory	Total	
2008					
JAN	55,740	291,138	338,051	8,679,791	
FEB	53,054	366,358	326,701	7,886,276	
MAR	55,784	330,364	342,426	8,237,219	
APR	54,303	281,673	357,676	8,133,287	
MAY	54,120	346,435	367,924	8,372,713	
JUN	51,119	323,907	347,194	7,750,288	
JUL	52,188	295,219	352,373	8,041,340	
AUG	54,425	360,129	314,118	8,252,095	
SEP	54,016	348,808	371,638	8,318,518	
OCT	58,659	383,761	429,425	8,837,450	
NOV	64,195	359,423	377,744	8,339,589	
DEC	62,824	419,213	440,159	8,982,797	
TOTAL	670,427	4,106,428	4,365,429	99,831,363	

<sup>a/</sup> Includes bulk milk disposition to nonpool plants.

<sup>b/</sup> Includes both fortified and nonfortified products. Includes acidophilus.



Table 12	Utilization of Class II Product Pounds by Regulated Handlers
----------	--

	Half & Half	Packaged Cream	Ice Cream	Cottage Cheese	Other <sup>a/</sup>	Animal Feed/Dump	Shrinkage	Total
----- Pounds -----								
2008								
JAN	9,313,201	7,384,653	17,885,672	8,382,614	75,309,835			118,275,975
FEB	8,249,083	6,944,366	19,627,824	7,370,972	76,865,793			119,058,038
MAR	8,193,330	7,827,961	24,311,958	8,394,546	94,793,091		7,501,881	151,022,767
APR	8,399,400	7,390,807	25,192,839	8,084,136	88,049,624		7,195,156	144,311,962
MAY	8,977,724	7,057,504	25,621,936	8,548,211	88,801,477		10,899,880	149,906,732
JUN	7,951,492	6,603,315	25,265,886	8,766,014	95,738,659		8,879,395	153,204,761
JUL	7,622,034	6,869,059	26,223,923	10,257,915	101,198,787		9,103,771	161,275,489
AUG	7,875,284	6,362,656	23,318,370	9,458,472	100,080,323		3,912,881	151,007,986
SEP	8,910,311	7,089,000	20,628,273	9,688,218	80,799,999		734,082	127,849,883
OCT	9,022,965	6,973,622	20,372,393	9,376,445	84,867,152		4,284,510	134,897,087
NOV	9,102,044	7,393,139	16,854,451	8,004,072	70,051,377		6,598,200	118,003,283
DEC	9,095,622	7,807,899	16,885,258	9,397,641	73,516,369		6,524,673	123,227,462
TOTAL	102,712,490	85,703,981	262,188,783	105,729,256	1,030,072,486		65,634,429	1,652,041,425

<sup>a/</sup> Includes eggnog, frozen cream, custards, puddings, pancake mixes, condensed and dispositions to nonpool plants.

Table 13	Utilization Class II Butterfat Pounds by Regulated Handlers
----------	---

	Half & Half	Packaged Cream	Ice Cream	Cottage Cheese	Other <sup>a/</sup>	Animal Feed/Dump	Shrinkage	Total
----- Pounds -----								
2008								
JAN	981,654	2,366,866	1,153,466	63,524	4,899,655			9,465,165
FEB	868,111	2,199,900	1,335,573	58,304	4,326,330			8,788,218
MAR	866,740	2,491,236	1,685,493	65,472	5,906,549			11,015,490
APR	900,258	2,298,793	1,744,902	65,287	5,640,980			10,650,220
MAY	957,220	2,275,104	1,800,506	66,146	5,770,677			10,869,653
JUN	838,946	2,213,510	1,871,784	65,212	6,898,483			11,887,935
JUL	809,326	2,295,156	1,857,982	79,052	7,528,694		26,036	12,596,246
AUG	824,763	2,195,128	1,598,099	73,925	7,155,014			11,846,929
SEP	938,455	2,391,950	1,484,871	78,442	5,644,105		9,690	10,547,513
OCT	947,575	2,444,704	1,343,480	75,625	5,688,398			10,499,782
NOV	954,543	2,504,620	1,128,575	64,589	5,078,178		51,580	9,782,085
DEC	952,433	2,659,025	1,214,853	79,305	4,970,793			9,876,409
TOTAL	10,840,024	28,335,992	18,219,584	834,883	69,507,856		87,306	127,825,645

<sup>a/</sup> Includes eggnog, frozen cream, custards, puddings, pancake mixes, condensed and dispositions to nonpool plants.

Table 14	Utilization of Class III Product Pounds by Regulated Handlers
----------	---

	Animal Feed and Dump	Shrinkage	Other <sup>a/</sup>	Total
2008	----- Pounds -----			
JAN			228,563,473	228,563,473
FEB			176,744,339	176,744,339
MAR			13,814,126	13,814,126
APR			400,751,903	400,751,903
MAY			17,618,986	17,618,986
JUN			12,246,506	12,246,506
JUL			399,669,922	399,669,922
AUG			373,272,692	373,272,692
SEP			374,198,167	374,198,167
OCT			16,134,352	16,134,352
NOV			406,489,897	406,489,897
DEC			15,883,000	15,883,000
TOTAL			2,435,387,363	2,435,387,363

<sup>a/</sup> Includes dispositions to nonpool plants and products used to produce cheese and cream cheese.

Table 15	Utilization of Class III Butterfat Pounds by Regulated Handlers
----------	---

	Animal Feed and Dump	Shrinkage	Other <sup>a/</sup>	Total
2008	----- Pounds -----			
JAN			8,350,289	8,350,289
FEB			7,003,350	7,003,350
MAR			1,436,180	1,436,180
APR			14,810,733	14,810,733
MAY			1,728,967	1,728,967
JUN			1,839,765	1,839,765
JUL			15,388,983	15,388,983
AUG			14,076,022	14,076,022
SEP			13,927,756	13,927,756
OCT			1,515,485	1,515,485
NOV			15,508,267	15,508,267
DEC			1,177,908	1,177,908
TOTAL			96,763,705	96,763,705

<sup>a/</sup> Includes dispositions to nonpool plants and products used to produce cheese and cream cheese.

Table 16	Utilization of Class IV Product Pounds by Regulated Handlers
----------	--

	Used to Fortify FMP	Animal Feed & Dump	Shrinkage	Ending Inventory	Other <sup>a/</sup>	Total
2008	----- Pounds -----					
JAN	2,001,356	3,921,833	7,468,274	16,584,227	151,108,040	181,083,730
FEB	1,668,445	3,352,716	7,157,287	17,090,285	158,397,196	187,665,929
MAR	1,872,336	3,497,867	11,788,988	25,334,765	261,053,585	303,547,541
APR	1,827,084	3,337,305	11,019,009	27,482,025	261,255,155	304,920,578
MAY	1,776,596	3,983,304	12,014,362	21,141,271	274,001,511	312,917,044
JUN	1,536,426	4,092,101	10,972,877	25,844,491	257,727,472	300,173,367
JUL	1,565,923	3,874,712	10,441,137	21,273,536	228,465,376	265,620,684
AUG	1,576,347	3,734,440	9,090,803	29,716,600	132,673,169	176,791,359
SEP	1,631,426	4,176,158	9,414,632	23,917,610	109,466,287	148,606,113
OCT	1,980,506	4,179,081	9,095,108	19,180,841	113,134,403	147,569,939
NOV	2,499,394	3,939,679	9,410,176	31,331,954	157,271,505	204,452,708
DEC	2,712,808	4,954,283	10,703,722	21,539,209	206,653,134	246,563,156
TOTAL	22,648,647	47,043,479	118,576,375	280,436,814	2,311,206,833	2,779,912,148

<sup>a/</sup> Includes dispositions to nonpool plants and products used to produce butter and powder.

Table 17	Utilization of Class IV Butterfat Pounds by Regulated Handlers
----------	--

	Animal Feed & Dump	Shrinkage	Ending Inventory	Other <sup>a/</sup>	Total
2008	----- Pounds -----				
JAN	82,906	298,120	999,653	7,769,843	9,150,522
FEB	71,156	271,016	894,154	6,989,551	8,225,877
MAR	75,357	266,317	1,365,712	9,145,873	10,853,259
APR	74,019	367,946	1,365,969	9,532,083	11,340,017
MAY	84,379	324,650	1,135,500	8,809,825	10,354,354
JUN	89,553	296,377	1,261,457	5,935,317	7,582,704
JUL	92,793	356,046	1,062,550	4,701,223	6,212,612
AUG	78,371	281,991	1,528,980	2,519,845	4,409,187
SEP	87,720	319,496	1,346,799	3,209,358	4,963,373
OCT	91,772	353,475	1,195,567	3,958,287	5,599,101
NOV	92,256	370,635	1,816,941	5,171,367	7,451,199
DEC	110,137	346,319	1,471,822	7,873,530	9,801,808
TOTAL	1,030,419	3,852,388	15,445,104	75,616,102	95,944,013

<sup>a/</sup> Includes dispositions to nonpool plants and products used to produce butter and powder.

Table 18 Total Disposition of Class I Products in the Southwest Area by All Handlers <sup>a/</sup>

	Whole Milk <sup>b/</sup>	Flavored Products	Low Fat 2 Percent <sup>c/</sup>	Low Fat 1 Percent <sup>c/</sup>	Skim Milk <sup>c/</sup>
2008	----- Product Pounds -----				
JAN	146,828,502	43,335,854	129,279,223	34,762,095	35,311,314
FEB	129,172,150	43,007,022	116,263,293	32,796,145	32,092,354
MAR	136,621,647	36,855,760	121,693,819	32,070,749	33,000,591
APR	133,893,584	45,739,219	120,798,989	33,863,443	33,511,675
MAY	136,532,307	39,421,266	125,735,328	33,420,936	33,583,313
JUN	134,117,134	16,681,043	117,904,656	26,367,911	31,298,588
JUL	141,375,391	14,265,185	122,967,350	26,757,103	31,941,622
AUG	140,254,942	24,810,195	126,548,113	30,647,768	33,359,005
SEP	135,434,997	43,342,727	124,175,776	33,283,562	33,776,495
OCT	140,140,627	50,073,267	128,430,382	35,158,783	35,157,720
NOV	133,474,109	42,830,531	122,309,674	31,507,513	32,778,883
DEC	143,844,708	37,216,050	128,601,997	31,011,127	32,399,089
TOTAL	1,651,690,098	437,578,119	1,484,708,600	381,647,135	398,210,649

	Buttermilk	Excess Shrinkage	Ending Inventory	Total
2008	----- Product Pounds -----			
JAN	3,332,567	3,165,632	16,941,684	412,956,871
FEB	3,200,731	3,721,455	16,622,070	376,875,220
MAR	3,246,602	3,995,478	17,095,568	384,580,214
APR	3,279,548	2,327,061	17,951,460	391,364,979
MAY	3,243,007	4,392,346	18,126,112	394,454,615
JUN	3,065,980	3,913,322	16,735,606	350,084,240
JUL	3,153,004	2,426,125	16,516,376	359,402,156
AUG	3,212,855	4,254,507	16,214,437	379,301,822
SEP	3,117,284	3,358,340	18,162,348	394,651,529
OCT	3,404,066	3,779,910	20,236,359	416,381,114
NOV	3,679,657	2,302,584	17,893,070	386,776,021
DEC	3,635,832	4,174,605	21,985,831	402,869,239
TOTAL	39,571,133	41,811,365	214,480,921	4,649,698,020

<sup>a/</sup> Includes regulated handlers, partially regulated handlers, producer-handlers, and handlers regulated by other Federal orders.

<sup>b/</sup> Includes milk disposition to nonpool plants.

<sup>c/</sup> Includes both fortified and nonfortified products. Includes acidophilus.

Table 19 Total Disposition of Class I Butterfat Pounds in the Southwest Area by All Handlers <sup>a/</sup>

	Whole Milk <sup>b/</sup>	Flavored Products	Low Fat 2 Percent <sup>c/</sup>	Low Fat 1 Percent <sup>c/</sup>	Skim Milk <sup>c/</sup>
2008			----- Pounds -----		
JAN	4,814,530	631,321	2,433,456	363,732	55,021
FEB	4,240,103	626,490	2,183,887	343,470	47,518
MAR	4,489,037	564,716	2,291,761	335,728	45,564
APR	4,390,672	649,572	2,271,426	353,471	49,250
MAY	4,478,811	592,633	2,373,021	359,330	52,338
JUN	4,403,707	364,841	2,231,387	276,076	48,897
JUL	4,629,137	349,475	2,319,369	280,812	57,137
AUG	4,600,244	457,745	2,383,311	321,627	57,221
SEP	4,439,689	627,794	2,345,944	350,510	59,583
OCT	4,592,141	787,113	2,413,701	365,427	66,740
NOV	4,370,955	827,425	2,288,703	323,429	57,871
DEC	4,705,061	829,034	2,410,087	317,840	52,198
TOTAL	54,154,087	7,308,159	27,946,053	3,991,452	649,338

	Buttermilk	Excess Shrinkage	Ending Inventory	Total
2008			----- Pounds -----	
JAN	54,583	291,506	338,051	8,982,200
FEB	51,996	366,358	326,701	8,186,523
MAR	53,464	330,364	342,426	8,453,060
APR	52,431	281,673	357,676	8,406,171
MAY	52,396	346,435	367,924	8,622,888
JUN	49,749	323,907	347,194	8,045,758
JUL	50,358	295,219	352,373	8,333,880
AUG	52,044	360,129	314,118	8,546,439
SEP	52,268	348,808	371,638	8,596,234
OCT	55,997	383,761	429,425	9,094,305
NOV	60,542	359,423	377,744	8,666,092
DEC	59,002	419,213	440,159	9,232,594
TOTAL	644,830	4,106,796	4,365,429	103,166,144

<sup>a/</sup> Includes regulated handlers, partially regulated handlers, producer-handlers, and handlers regulated by other Federal orders.

<sup>b/</sup> Includes milk disposition to nonpool plants.

<sup>c/</sup> Includes both fortified and nonfortified products. Includes acidophilus.

Table 20

Disposition of Class I Products in the Southwest Area  
by Regulated Handlers Under Southwest Federal Order No. 126 <sup>a/</sup>

	Whole Milk <sup>b/</sup>	Flavored Products	Low Fat 2 Percent <sup>c/</sup>	Low Fat 1 Percent <sup>c/</sup>	Skim Milk <sup>c/</sup>
2008	----- Product Pounds -----				
JAN	134,639,034	40,870,493	118,377,024	31,749,067	32,327,623
FEB	117,586,329	40,346,818	106,284,035	29,721,146	29,329,617
MAR	126,285,084	35,025,492	112,641,694	29,286,628	30,129,675
APR	122,078,697	43,376,525	110,613,143	30,918,576	30,752,601
MAY	126,393,393	37,669,460	114,192,117	30,454,688	30,747,337
JUN	123,119,924	15,043,263	108,166,686	23,538,919	28,064,494
JUL	129,099,365	12,726,131	113,095,841	24,135,409	29,382,548
AUG	129,245,410	22,374,498	116,659,052	27,685,297	30,719,866
SEP	124,452,234	40,390,284	114,083,181	30,137,802	30,916,139
OCT	129,136,492	46,701,417	119,319,516	32,101,129	32,444,179
NOV	122,253,302	39,434,906	112,176,713	28,799,904	30,118,766
DEC	133,325,834	34,644,790	119,041,601	28,180,265	29,836,090
TOTAL	1,517,615,098	408,604,077	1,364,650,603	346,708,830	364,768,935

	Buttermilk	Excess Shrinkage	Ending Inventory	Total
2008	----- Product Pounds -----			
JAN	3,072,141	3,165,632	16,941,684	381,142,698
FEB	2,925,205	3,721,455	16,622,070	346,536,675
MAR	3,041,592	3,995,478	17,095,568	357,501,211
APR	3,020,100	2,327,061	17,951,460	361,038,163
MAY	3,009,050	4,392,346	18,126,112	364,984,503
JUN	2,834,965	3,913,322	16,735,606	321,417,179
JUL	2,888,802	2,426,125	16,516,376	330,270,597
AUG	2,990,425	4,254,507	16,214,437	350,143,492
SEP	2,889,210	3,358,340	18,162,348	364,389,538
OCT	3,168,046	3,779,910	20,236,359	386,887,048
NOV	3,440,179	2,302,584	17,893,070	356,419,424
DEC	3,403,330	4,174,605	21,985,831	374,592,346
TOTAL	36,683,045	41,811,365	214,480,921	4,295,322,874

<sup>a/</sup> All data on a reported basis.<sup>b/</sup> Includes bulk milk disposition to nonpool plants.<sup>c/</sup> Includes both fortified and nonfortified products. Includes acidophilus.

Table 21

Disposition of Class I Butterfat Pounds in the Southwest Area  
by Regulated Handlers Under Southwest Federal Order No. 126 <sup>a/</sup>

	Whole Milk <sup>b/</sup>	Flavored Products	Low Fat 2 Percent <sup>c/</sup>	Low Fat 1 Percent <sup>c/</sup>	Skim Milk <sup>c/</sup>
2008			----- Pounds -----		
JAN	4,407,584	585,127	2,218,536	333,503	51,707
FEB	3,857,035	569,055	1,989,887	312,834	44,098
MAR	4,146,825	527,192	2,115,399	308,102	42,623
APR	3,999,863	601,578	2,073,094	324,087	46,089
MAY	4,149,275	555,874	2,145,301	322,047	48,579
JUN	4,038,031	332,461	2,040,677	247,891	45,134
JUL	4,221,253	316,648	2,126,668	254,255	53,540
AUG	4,233,086	409,151	2,189,909	291,727	53,215
SEP	4,074,130	572,609	2,149,312	318,843	55,505
OCT	4,223,749	703,543	2,236,170	334,299	60,659
NOV	3,996,804	720,965	2,091,544	296,120	53,792
DEC	4,352,122	744,418	2,223,354	289,062	46,956
TOTAL	49,699,757	6,638,621	25,599,851	3,632,770	601,897

	Buttermilk	Excess Shrinkage	Ending Inventory	Total
2008			----- Pounds -----	
JAN	50,891	291,506	338,051	8,276,905
FEB	48,546	366,358	326,701	7,514,514
MAR	51,365	330,364	342,426	7,864,296
APR	50,223	281,673	357,676	7,734,283
MAY	50,030	346,435	367,924	7,985,465
JUN	46,682	323,907	347,194	7,421,977
JUL	47,341	295,219	352,373	7,667,297
AUG	49,198	360,129	314,118	7,900,533
SEP	48,830	348,808	371,638	7,939,675
OCT	53,004	383,761	429,425	8,424,610
NOV	57,966	359,423	377,744	7,954,358
DEC	56,688	419,213	440,159	8,571,972
TOTAL	610,764	4,106,796	4,365,429	95,255,885

<sup>a/</sup> All data on a reported basis.<sup>b/</sup> Includes bulk milk disposition to nonpool plants.<sup>c/</sup> Includes both fortified and nonfortified products. Includes acidophilus.

**Table 22** Disposition of Class I Products on Routes Outside the Southwest Marketing Area by Regulated Handlers Under Southwest Federal Order No. 126 <sup>a/</sup>

	Whole Milk <sup>b/</sup>	Flavored Products	Low Fat 2 Percent <sup>c/</sup>	Low Fat 1 Percent <sup>c/</sup>	Skim Milk <sup>c/</sup>	Buttermilk	Total
2008	----- Product Pounds -----						
JAN	8,558,526	2,884,949	4,431,751	1,196,531	1,494,536	229,628	18,795,921
FEB	8,156,672	2,714,997	4,214,928	1,190,512	1,824,163	206,010	18,307,282
MAR	7,825,692	2,736,536	4,319,921	1,264,188	1,689,626	202,766	18,038,729
APR	7,595,210	3,035,253	5,184,588	1,545,505	2,009,223	190,081	19,559,860
MAY	7,866,153	2,944,255	4,631,509	1,491,352	1,558,357	190,053	18,681,679
JUN	6,698,015	2,233,900	3,823,878	1,051,059	1,194,702	193,737	15,195,291
JUL	7,365,787	2,512,758	4,177,061	1,135,809	1,653,597	201,303	17,046,315
AUG	6,816,358	2,555,486	3,971,556	1,208,692	1,597,680	214,639	16,364,411
SEP	7,485,140	2,878,435	4,018,858	1,266,762	1,758,793	203,791	17,611,779
OCT	7,145,214	3,869,144	4,066,538	1,114,052	1,539,134	226,114	17,960,196
NOV	6,398,024	3,120,304	3,857,529	1,110,699	1,517,074	252,954	16,256,584
DEC	7,140,452	3,455,330	4,122,031	1,332,431	1,590,441	249,786	17,890,471
TOTAL	89,051,243	34,941,347	50,820,148	14,907,592	19,427,326	2,560,862	211,708,518

<sup>a/</sup> All data on a reported basis.

<sup>b/</sup> Includes milk disposition to nonpool plants.

<sup>c/</sup> Includes both fortified and nonfortified products. Includes acidophilus.

**Table 23** Disposition of Class I Butterfat Pounds on Routes Outside the Southwest Marketing Area by Regulated Handlers Under Southwest Federal Order No. 126 <sup>a/</sup>

	Whole Milk <sup>b/</sup>	Flavored Products	Low Fat 2 Percent <sup>c/</sup>	Low Fat 1 Percent <sup>c/</sup>	Skim Milk <sup>c/</sup>	Buttermilk	Total
2008	----- Pounds -----						
JAN	240,637	58,053	83,692	12,481	3,542	4,849	403,254
FEB	219,701	51,475	79,697	12,367	4,014	4,508	371,762
MAR	218,903	51,292	81,768	13,030	3,511	4,419	372,923
APR	220,419	56,661	97,693	15,692	4,459	4,080	399,004
MAY	222,238	54,619	87,491	15,127	3,683	4,090	387,248
JUN	189,445	44,871	72,384	10,880	6,294	4,437	328,311
JUL	214,915	51,277	79,040	11,821	12,143	4,847	374,043
AUG	195,183	50,710	75,211	12,814	12,417	5,227	351,562
SEP	211,160	55,825	77,010	14,047	15,615	5,186	378,843
OCT	201,797	105,018	77,180	11,700	11,490	5,655	412,840
NOV	189,831	92,326	73,230	11,592	12,023	6,229	385,231
DEC	203,188	100,773	77,890	13,810	9,028	6,136	410,825
TOTAL	2,527,417	772,900	962,286	155,361	98,219	59,663	4,575,846

<sup>a/</sup> All data on a reported basis.

<sup>b/</sup> Includes milk disposition to nonpool plants.

<sup>c/</sup> Includes both fortified and nonfortified products. Includes acidophilus.



**Table 24** Number of Producers, Average Daily Delivery Per Producer, and Average Butterfat Test of Producer Milk in the Southwest Federal Order No. 126

YEAR AND MONTH	NUMBER OF PRODUCERS	AVERAGE DAILY DELIVERY PER PRODUCER <sup>a/</sup>	AVERAGE BUTTERFAT TEST OF PRODUCER MILK <sup>b/</sup>				TOTAL
			CLASS I	CLASS II	CLASS III	CLASS IV	
		----POUNDS----	-----PERCENT-----				
2008							
JAN	773	34,804	2.198	9.711	3.657	4.756	3.808
FEB	596	43,624	2.186	9.010	3.973	4.037	3.716
MAR	545	40,042	2.216	8.803	12.434	3.178	3.686
APR	602	60,243	2.155	8.999	3.691	3.311	3.594
MAY	552	41,004	2.201	8.488	11.377	2.961	3.560
JUN	539	40,531	2.327	8.248	17.219	2.063	3.518
JUL	587	56,841	2.334	8.819	3.792	1.818	3.506
AUG	567	52,718	2.262	9.334	3.766	1.508	3.536
SEP	577	52,029	2.195	10.744	3.728	2.614	3.590
OCT	584	30,857	2.207	10.122	11.262	2.949	3.706
NOV	631	50,383	2.256	9.720	3.809	3.169	3.680
DEC	518	37,610	2.316	9.587	8.044	3.609	3.756
AVERAGE	589	44,938	2.236	9.217	3.957	2.997	3.631

<sup>a/</sup> Based on the number of days in each month, not weighted according to actual number of days each producer made delivery. All data on a reported basis.

<sup>b/</sup> Represents weighted average butterfat test.

## Number of Producers, 2000-2008

